



# Engineering Research Centers

# ERC

## Gen-4 ERC: Infrastructure Management

NSF 19-503

Kickoff Meeting  
October 14-15

Deborah Jackson, ENG/ERC  
Program Director



# Management Structure

- An **effective management structure** begins with a clear understanding of the ERC goals
- Has the ability to adapt to the changing needs of the ERC
- Clearly designate a lead person or team with responsibility for each foundational component



# OUTLINE

- **Internal ERC Management Structures**
- External ERC Management Structures
- Dissemination and Data Management

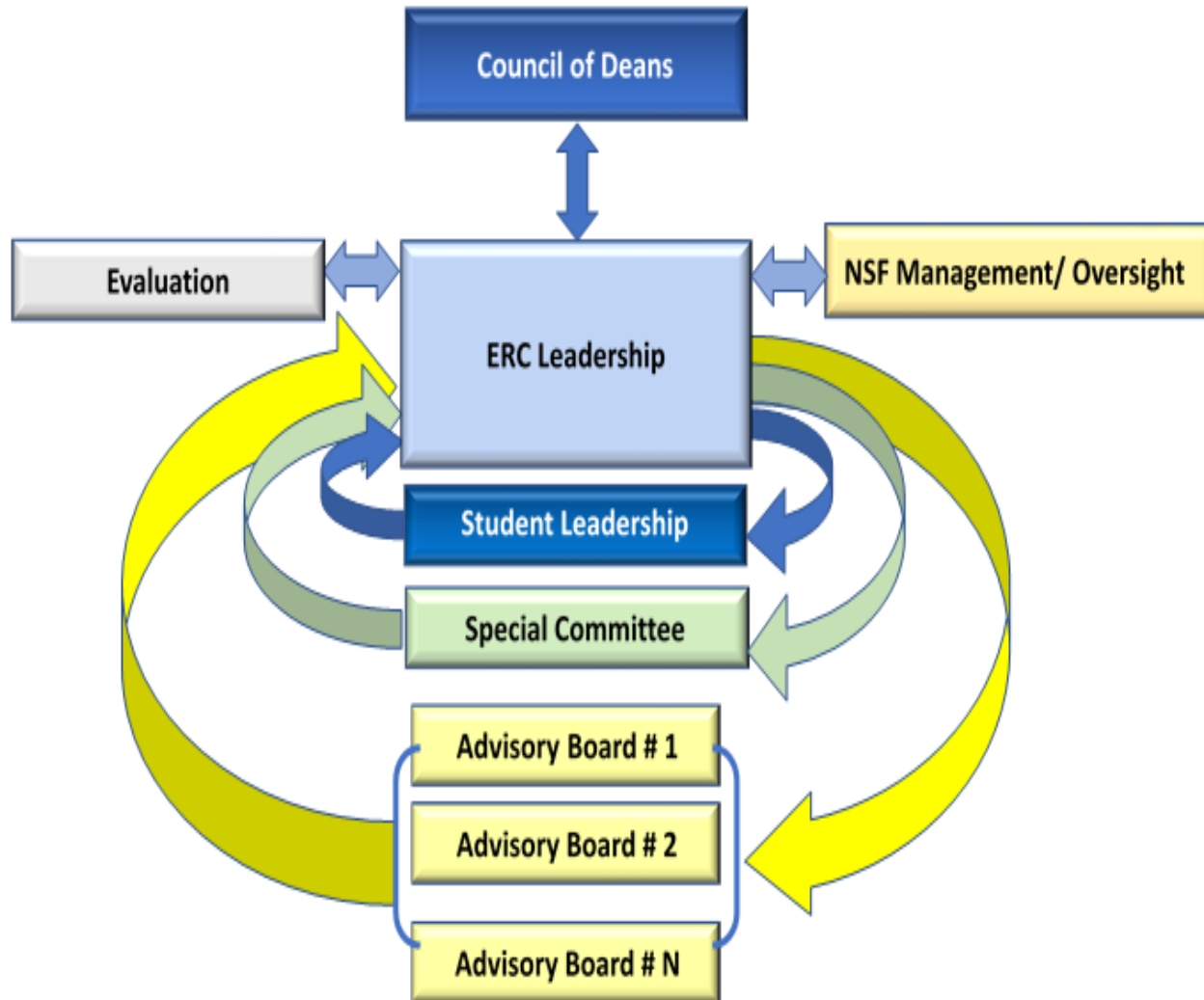


# Required ERC Configuration

- **Lead Institution**
  - Responsible to lead and manage the ERC
- **Lead and Core Institutions**
  - Contribute diverse teams of faculty and students to fulfill vision
  - Cost sharing required
- **Affiliated Institutions**
  - Contribute faculty and students who carry out research/education
  - No cost sharing
- **Foreign Partner Universities (If relevant)**
  - Faculty and students carry out research/education
  - Support for foreign partners comes from foreign sources



# Flexibility in Management Processes



## PIs will:

- Define the roles and charter of various advisory boards/entities;
- Explain the ERC's processes for;
  - Team communication;
  - Taking in and responding to advisory feedback



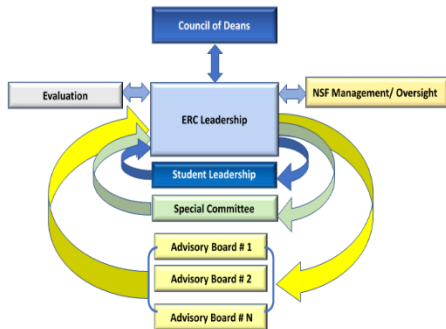
# Mandated Advisory Boards Roles

- **Dean's Council**

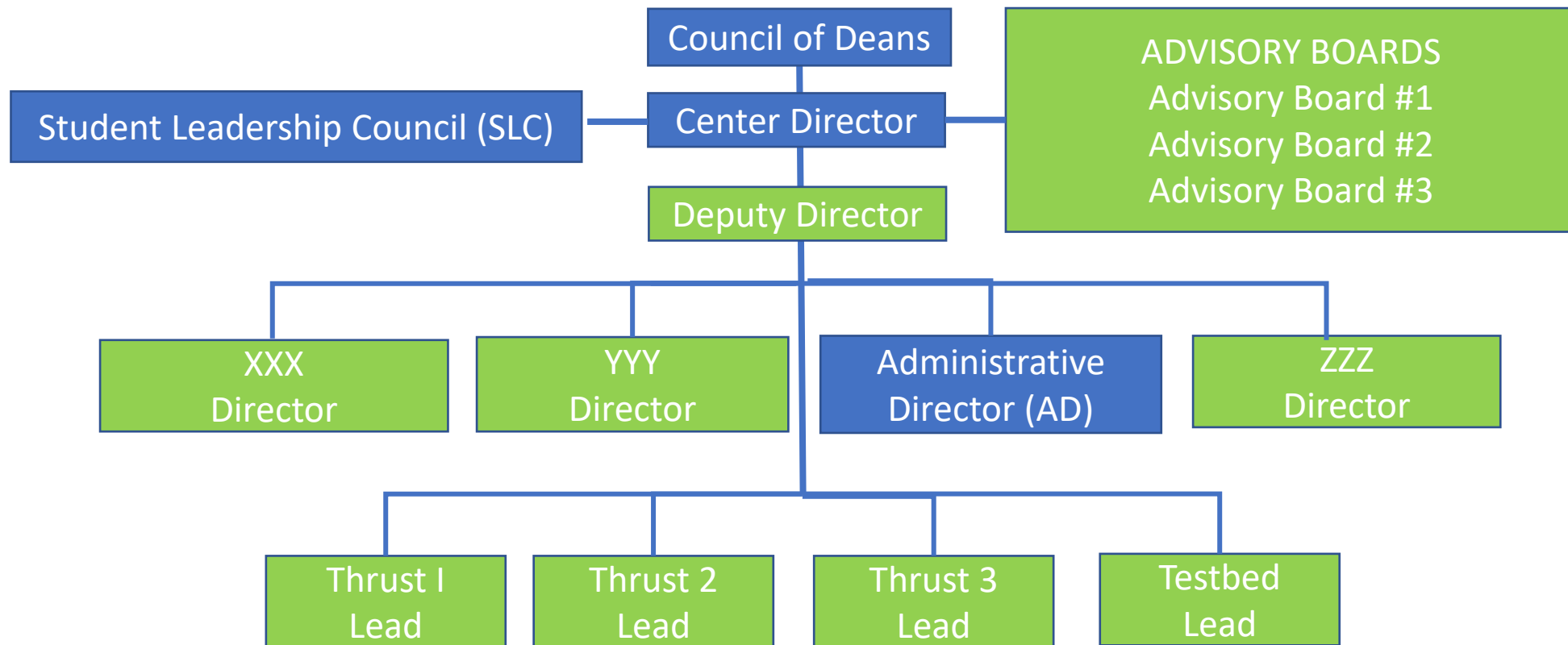
- Oversees ERC execution; assures departmental cooperation for faculty participation
- Oversees diversity partnership between the ERC and the contributing departments
- Assures cross-university partnership and agreements

- **Student Leadership Council (SLC) Chair and co-Chair –**

- Set and fulfill the SLC vision,
- develop SLC activities,
- develop and maintain the SLC membership,
- lead SLC SWOT analysis,
- attend ERC Leadership Team meetings,
- organize SLC SWOT meeting with NSF site visit team



# Sample Org Chart





# Roles of Mandated Leadership Team Positions

- **Director** - Set and fulfill the vision, responsible for strategic planning, building a diverse and committed team, allocation of funds, management, and reporting\*
- **Administrative Director** - Day to day management, financial management, management of information system for reporting and database, management of site visits and other events (Orientation sessions provided)

[\\*Team Science: Bringing it all together for Successful Convergence Research \(65 min\) Michelle Bennett](#)





# OUTLINE

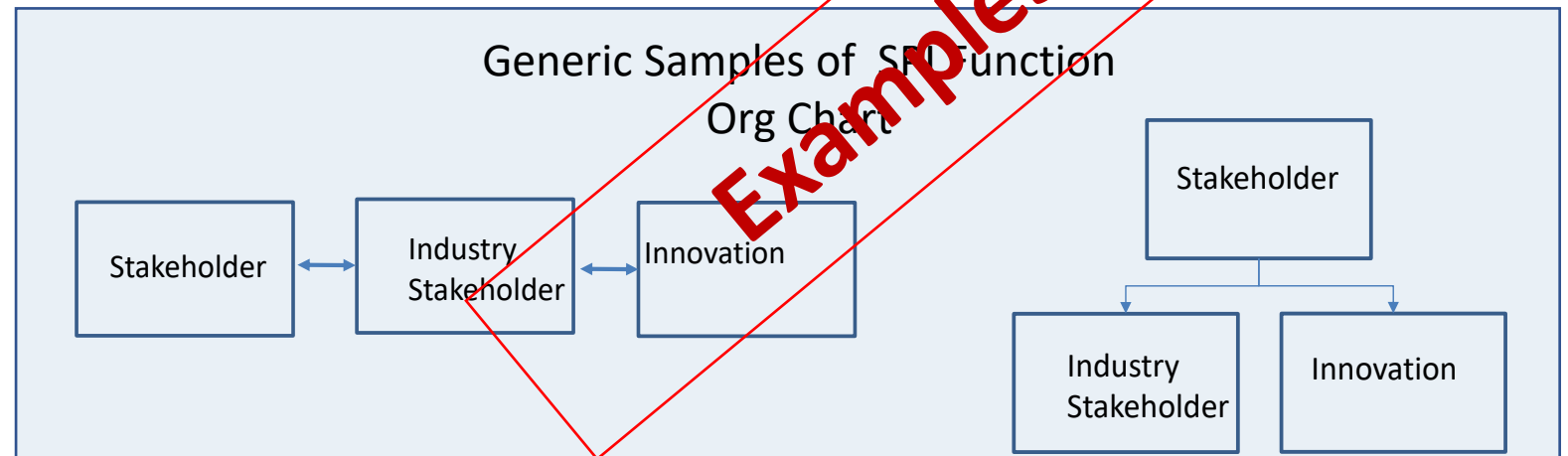
- Internal ERC Management Structures
- **External ERC Management Structures**
- Dissemination and Data Management



# Strategic Partner & Innovation (SPI) Lead

Creates strategic plan for nurturing ERC's innovation ecosystem. Under that umbrella, the SPI Director defines the organization, reporting structure, and processes needed to complete the following 3 functions:  
**see details in Innovation Ecosystem presentation**

- a) nurture innovation ecosystem,
- b) manage industry partner relations,
- c) engage stakeholders.





# OUTLINE

- Internal ERC Management Structures
- External ERC Management Structures
- **Dissemination and Data Management**



# Dissemination and Data Management

- **Dissemination Plan:** NSF PAPPG Chapter XI Section D.4 “Dissemination and Sharing of Research Results”
- **Public Access Policy:** NSF PAPPG Chapter XI Section D.2 “Copyright”  
[https://www.nsf.gov/news/special\\_reports/public\\_access/](https://www.nsf.gov/news/special_reports/public_access/)
- **Data Management Plan** guidelines:  
<https://www.nsf.gov/bfa/dias/policy/dmp.jsp>



# Relevant Materials

- Best Practices Manual (to be updated), [http://erc-assoc.org/best\\_practices/best-practices-manual](http://erc-assoc.org/best_practices/best-practices-manual)
- ERCWEB Library, <https://www.erc-reports.org/public/library>
  - Reporting requirements/guidelines
  - Performance metrics

## QUESTIONS